

# Spot the Difference

## SKIN CANCERS



**Actinic Keratosis:** These precancerous lesions can turn cancerous.



**Basal cell carcinomas:** Most common, least dangerous form of skin cancer. Red, pale or pearly in color, it can look like a hive or pimple. May ulcerate or fail to completely heal.



**Squamous cell carcinoma** are tumors that may appear as nodules or as red, scaly patches (often larger than 1 inch). This cancer can develop into large masses, and unlike basal cell carcinoma, it can spread to other parts of the body.

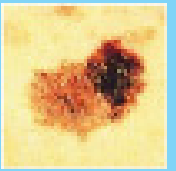


**Melanomas** are the deadliest form of skin cancer. They are characterized by dark pigmentation, often with different shades of color, and irregular, asymmetric shapes.

## Look for A-B-C-D

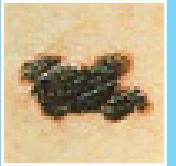
### Asymmetry

-one half unlike the other half.



### Border irregular

-often notched uneven, or blurred.



### Color varied

-shades of brown and black are present.



### Diameter

-larger than 6 mm (about the size of a pencil eraser) is more likely to be a melanoma.



**See your doctor immediately if you see anything unusual or notice any changes to your skin.**